

U.S. DEPARTMENT OF
ENERGY

Office of
**ENERGY EFFICIENCY &
RENEWABLE ENERGY**

Alternative Fueling Station Locator

March 26, 2019

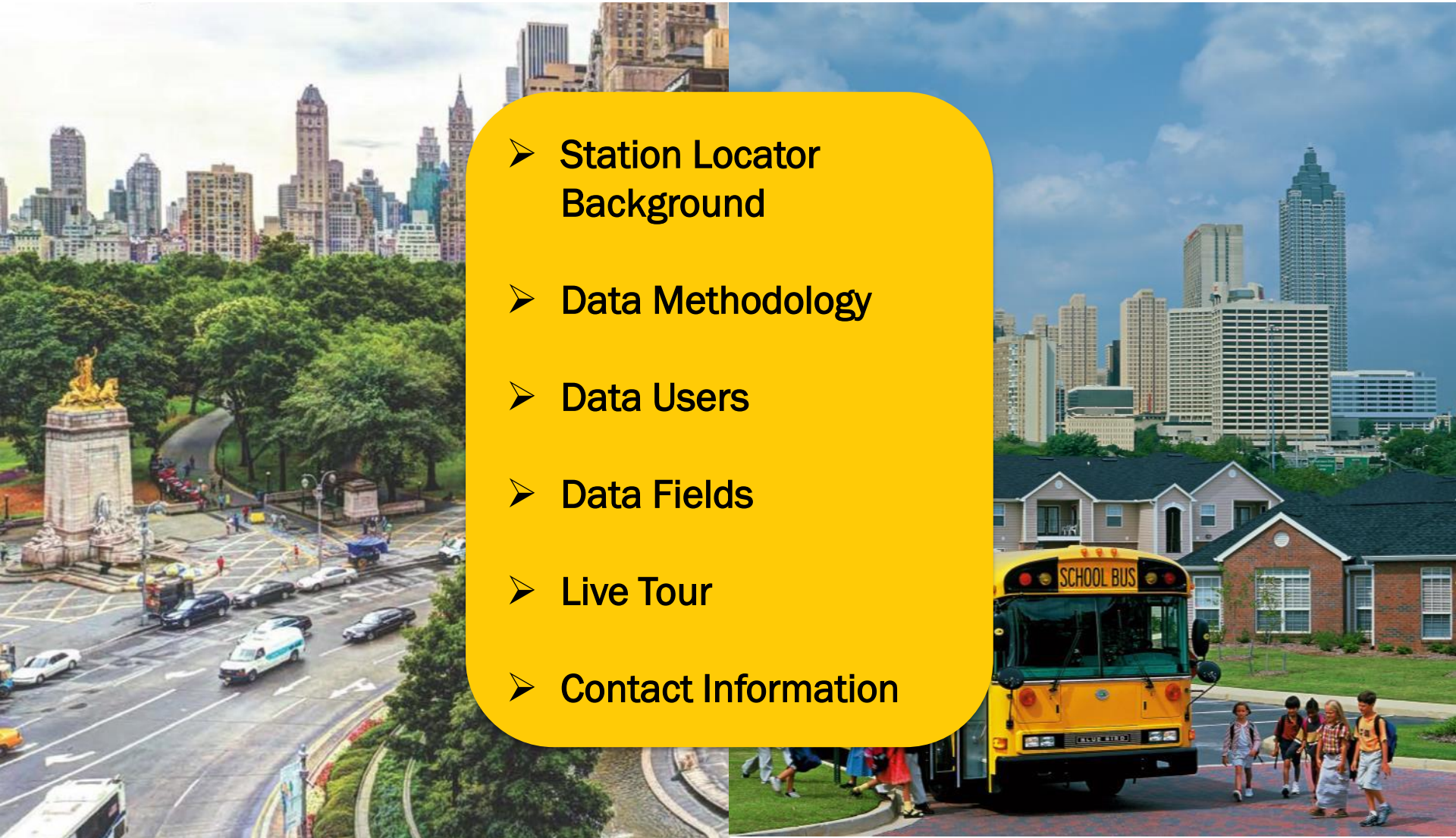
Steve Lommele, NREL
Abby Brown, ICF

technicalresponse@icf.com, 800-254-6735
Stephen.Lommele@nrel.gov, 303-275-3720
Abby.Brown@icf.com, 303-792-7804



Agenda

- Station Locator Background
- Data Methodology
- Data Users
- Data Fields
- Live Tour
- Contact Information

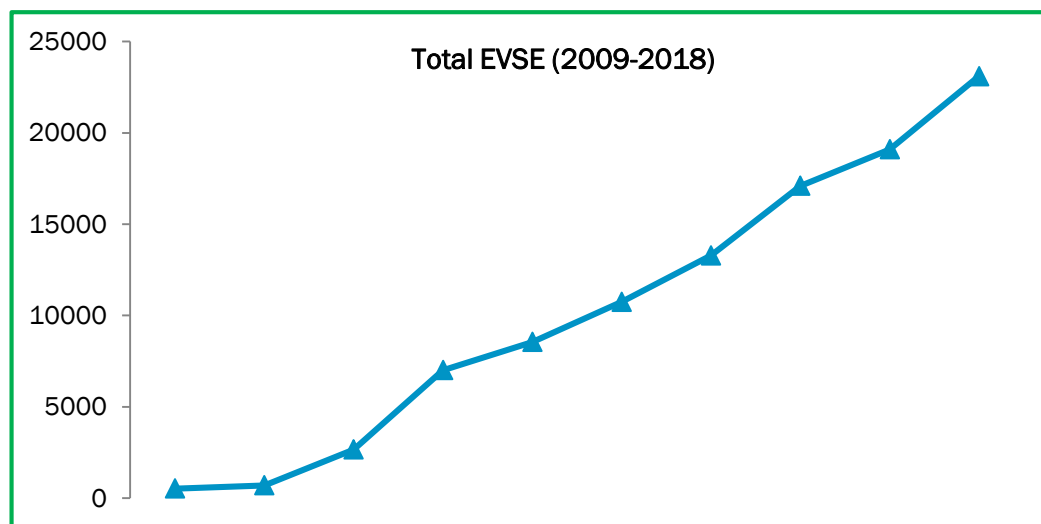
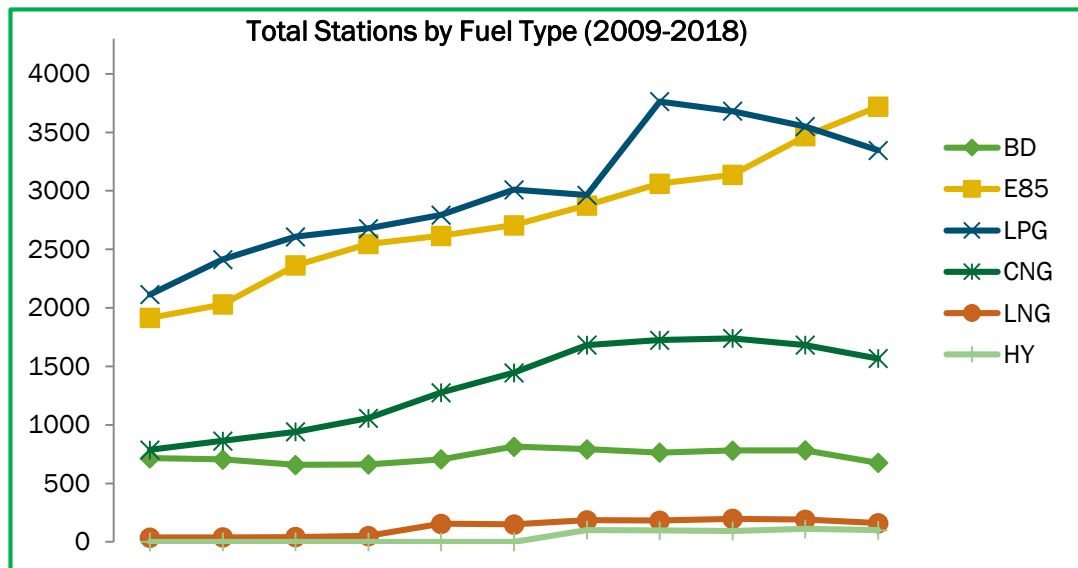


Station Locator Background

- Began in mid-1990s

- Fuels

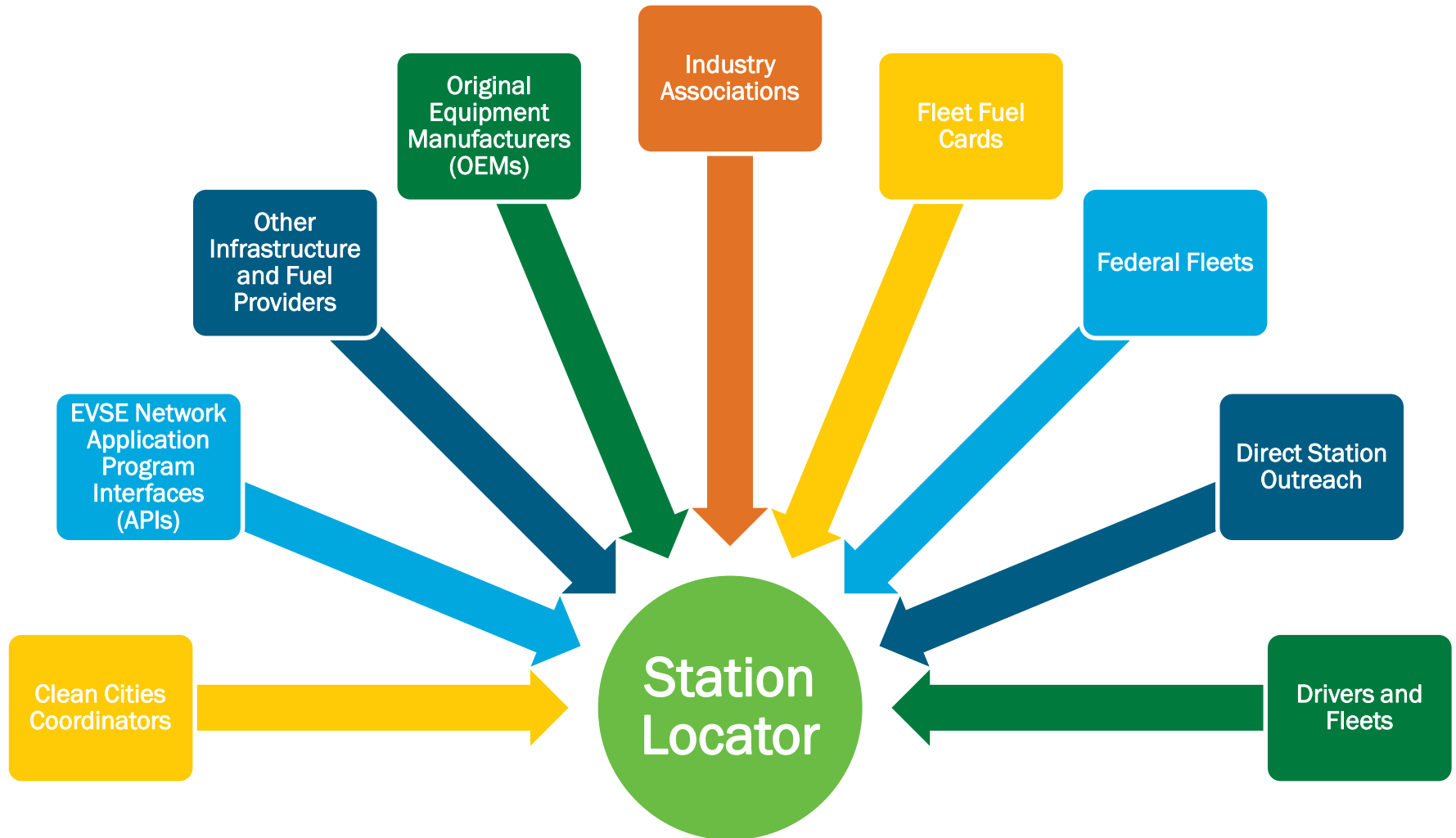
- Biodiesel (B20 and above)
- Compressed natural gas (CNG)
- Electric vehicle supply equipment (EVSE)
- Ethanol (E85)
- Liquefied natural gas (LNG)
- Propane (liquefied petroleum gas)
- Hydrogen



Station Locator Inclusion Criteria

<i>Includes</i>	<i>Does Not Include</i>
<ul style="list-style-type: none">✓ Public stations✓ Private stations✓ Planned stations✓ Temporarily out of service stations✓ Stations in the United States✓ Stations in Canada	<ul style="list-style-type: none">X Residential fuelingX Private (resident only) multi-unit dwelling EVSEX Off-road vehicle stations

Station Locator Data Methodology



What Sets the Station Locator Apart?

Accurate and Unique Data

Careful comparing counts with other tools!

- All details confirmed before adding a station or removing stations that go out of service
- Conservative inclusion criteria (e.g., stations not for vehicle fueling left out)

Comprehensive and Fuel-Neutral Approach

- Same visibility to all alternative fuel types
- Allows user to consider several fuel options at once

Free and Independent Data

- Available through Station Locator online, Data Download, and upon request at no cost
- Independent of any special interests, allowing for collaborations (e.g., APIs)

Users and Uses of Station Locator Data

Users



Uses



Station Locator Data Fields

Fuel	Station Locator	Behind the Scenes
Bio-diesel	Blends available	<ul style="list-style-type: none"> • Maximum biodiesel level • Seasonal blends • Custom blends • Facility type*
CNG	<ul style="list-style-type: none"> • Fill type (fast, timed) • Compression (psi) • Vehicle accessibility (light-, medium-, or heavy-duty) 	<ul style="list-style-type: none"> • Generator information • Gas provider • Number of compressors • Compressor types • Total compression capacity* • Storage capacity* • Number of dispensers* • On-site renewable source* • Facility type*
EVSE	<ul style="list-style-type: none"> • Charging network (link to website) • Charging Level (L1, L2, DC fast) • Number of outlets • Connector type 	<ul style="list-style-type: none"> • Workplace charging (yes or no) • Manufacturer* • Power output * • Pricing* • On-site renewable source* • Facility type* • Open dates (all stations)

Fuel	Station Locator	Behind the Scenes
E85	Mid-level blends	<ul style="list-style-type: none"> • Other ethanol blends* • Facility type*
Hydrogen	Status website	<ul style="list-style-type: none"> • Pressure* • Standards compliance* • Retail station (yes or no) • Facility type*
LNG	Vehicle accessibility	<ul style="list-style-type: none"> • Generator information • Gas provider • On-site renewable source* • Facility type*
Propane	Services (primary or secondary)	<ul style="list-style-type: none"> • Sufficient Fill Rate (yes or no) • Nozzle Type • Facility type*

* Indicates coming soon online

New Primary Propane Station Criteria

Old Criteria	New Criteria
Staffed during regular business hours (i.e., 9am-5pm)	Staffed during regular business hours (i.e., 9am-5pm)
Do not require drivers to call ahead in order to fuel	Do not require drivers to call ahead in order to fuel
Accept credit cards or fleet cards as a payment type	Accept credit cards or fleet cards as a payment type
Equipped with a dedicated (or purpose-built) fuel dispenser for vehicle fueling	Can fill at a rate of 12 gallons per min. or faster, or at a rate similar to filling a gasoline vehicle

Live Station Locator Tour

- **Station Locator Tool**
 - Public Station Searches
 - Advanced Filters Searches
 - Including private and planned stations
 - Additional Features
 - Map a Route
 - Add a Station
 - Edit a Station
 - About the Data
- **Where to Find Station Locator Data on the AFDC**

Alternative Fueling Station Locator
Find alternative fueling stations in the United States and Canada. For U.S. stations, see [data by state](#). For Canadian stations in French, see [Natural Resources Canada](#).

Public Stations **Advanced Filters** 30,553 results in U.S. and Canada

Enter location All Fuels

Legend

- Biodiesel
- CNG
- Electric
- Ethanol
- Hydrogen
- LNG
- Propane

© MapTiler © OpenStreetMap contributors
© MapTiler © OpenStreetMap contributors

iPhone App for U.S. stations Android App for U.S. stations Developer APIs Embed Tool Submit New Station About the Data

afdc.energy.gov/stations/#/find/

Live Station Locator Tour: Useful Links

- **Station Data by State**
 - afdc.energy.gov/stations/states
- **Download Station Data**
 - afdc.energy.gov/data_download
- **Maps & Data**
 - afdc.energy.gov/data/
- **TransAtlas**
 - maps.nrel.gov/transatlas
- **EVI-Pro Lite**
 - afdc.energy.gov/evi-pro-lite
- **Information by State**
 - afdc.energy.gov/states/
- **About the Data**
 - afdc.energy.gov/stations/#/find/nearest?show_about=true

Station Locator Updates and Submissions

SUBMIT a New Station Online

- Search the Station Locator to make sure the station is not listed
- Click “Submit New Station” and fill out the online form

UPDATE an Existing Station Online

- Search the Station Locator to find and select the station
- Click “Report a change” and fill out the online form

Submit or Update via EMAIL

- technicalresponse@icf.com
- Request a submission spreadsheet, OR
- Provide station information in the email text or an attached document



Send multi-unit dwelling EVSE!

Provide as much information as possible!

Changes do not go live immediately!

Questions?

Contact Information

- **Stephen Lommele**
 - Stephen.Lommele@nrel.gov
 - 303-275-3720

- **Abby Brown**
 - Abby.Brown@icf.com
 - 303-792-7804

- **Technical Response Service (TRS)**
 - TechnicalResponse@icf.com
 - 800-254-6735
 - **Contact the TRS for a bulk station submission spreadsheet and questions about the Station Locator*